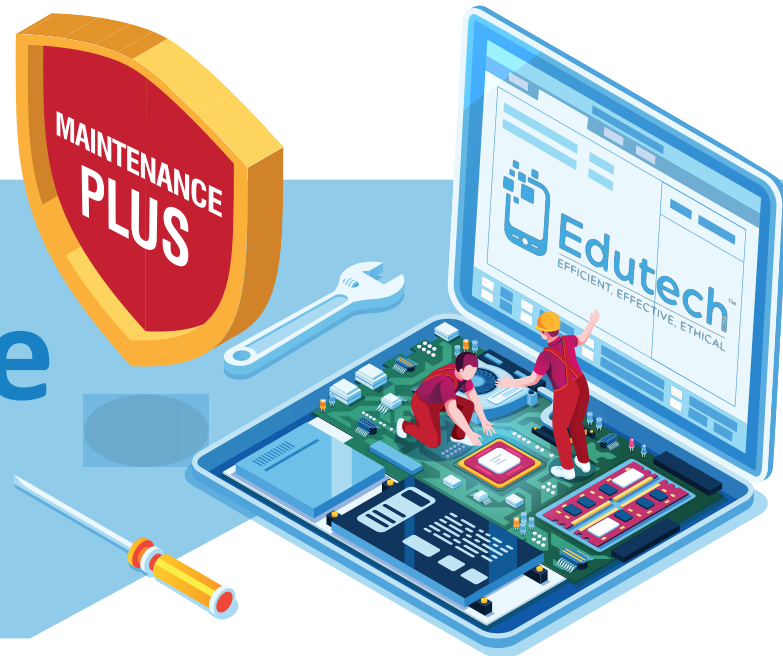


Maintenance Plus

Laptop Hybrid Protection



Edutech have brought together extended hardware cover and low-cost chargeable repairs to create a hybrid product that offers great protection for a fraction of the cost. Designed to provide an all-in-one solution and a cost-effective alternative to insurance.

Warranty

As standard, Edutech Maintenance Plus provides a collect and return extended warranty offering, a fast and efficient repair service designed to protect mobile equipment against mechanical breakdown.

In the event of breakdown, Edutech will provide remote diagnostics to determine the fault. And, if necessary, arrange a courier to collect your mobile equipment. Edutech will repair or replace then return to any UK location.

Inclusive of the manufacturer's warranty period, Edutech look after your device from day one. This provides both a single point of contact and consistent level of support throughout your mobile equipments life cycle.

What's Covered: Laptops - All major manufacturers covered

Plus

In the event of damage Edutech will collect your mobile equipment and either repair or provide a replacement*.

Edutech will provide a FREE annual health check if required, on your mobile equipment, covering software updates, virus/phishing software removal etc.

Edutech Maintenance Plus offers a higher level of support and service than standard insurance products with the added benefit

of an instant approval to reduce the time you are without your equipment.

Examples of damages: Smashed/cracked screen, broken plastics.

Provision and Process

- In the event of breakdown or damage the user contacts Edutech support@edutech.zone
 - If the mobile equipment is in need of a hardware repair, Edutech will arrange collection and provide packaging
 - Upon receiving the mobile equipment, Edutech will further diagnose and carry out the repair for free
 - Once repaired, the equipment is subjected to Quality Control and tested to ensure it is repaired to full working order
 - Edutech will package the mobile equipment and return send to the user
 - Edutech covers all costs for parts, labour and carriage
 - 5-day turn around upon receiving the customer's device*
- * Subject to parts availability

Additional Support

- Unlimited help desk support
- Replace battery if charge held is less than 60% of original capacity
- Check for latest software updates and drivers if required
- Virus and malware removal
- Check for water damage and repair if required

*LIQUID DAMAGE / WRITE-OFF. In the event your mobile equipment is a total write off due to extensive damage or through excessive liquid damage a replacement will be provided. Replacement will be brand new or of the same age and condition as the original. Excludes cosmetic damage I.E. wear and tear, scratches. Maintenance Plus must be purchased during the manufacturer's standard warranty period. Your support contract will begin from the date you purchased your equipment.